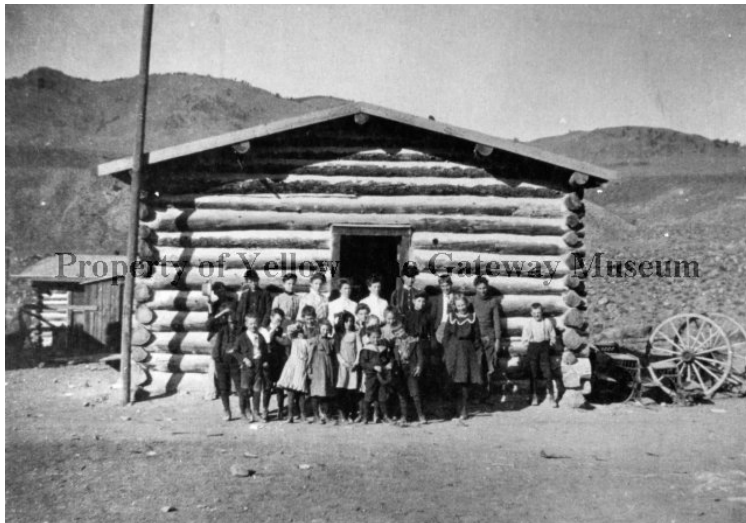


*"The disadvantage of men not knowing the past is that they do not know the present. History is a hill or high point of vantage, from which alone men see the town in which they live or the age in which they are living."* G. K. Chesterson

Understanding ones past is the key to understanding ones present. Gardiner public schools began and still exists today in one of the most historic areas of our nation. It would not be what it is today if President Theodore Roosevelt had not pushed it into existence with the creation of Yellowstone National Park in 1872. The first Gardiner School building, built 13 years later, became the foundation of what Gardiner Public schools are today.



An 1885 account reported that Gardiner had neither school nor church, but that was soon remedied by construction of this log building.



A one-story schoolhouse was built of native rock in 1904. A second story was added in 1910, when money was available.

The photo on the left is the second school house built in Gardiner in 1903 and replaced the one-room log school house that was built in 1885. It is before the second story was added in 1910 in the pictures below.



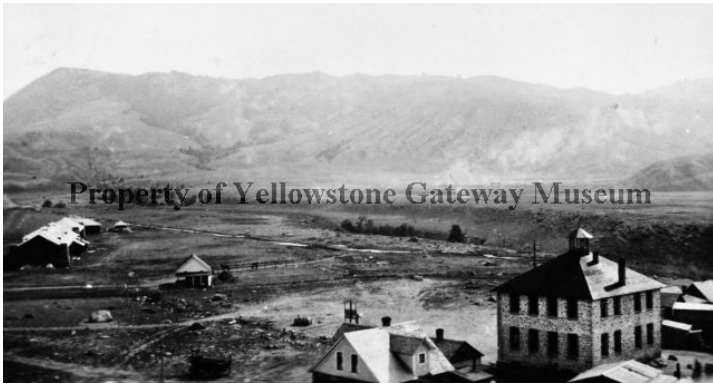


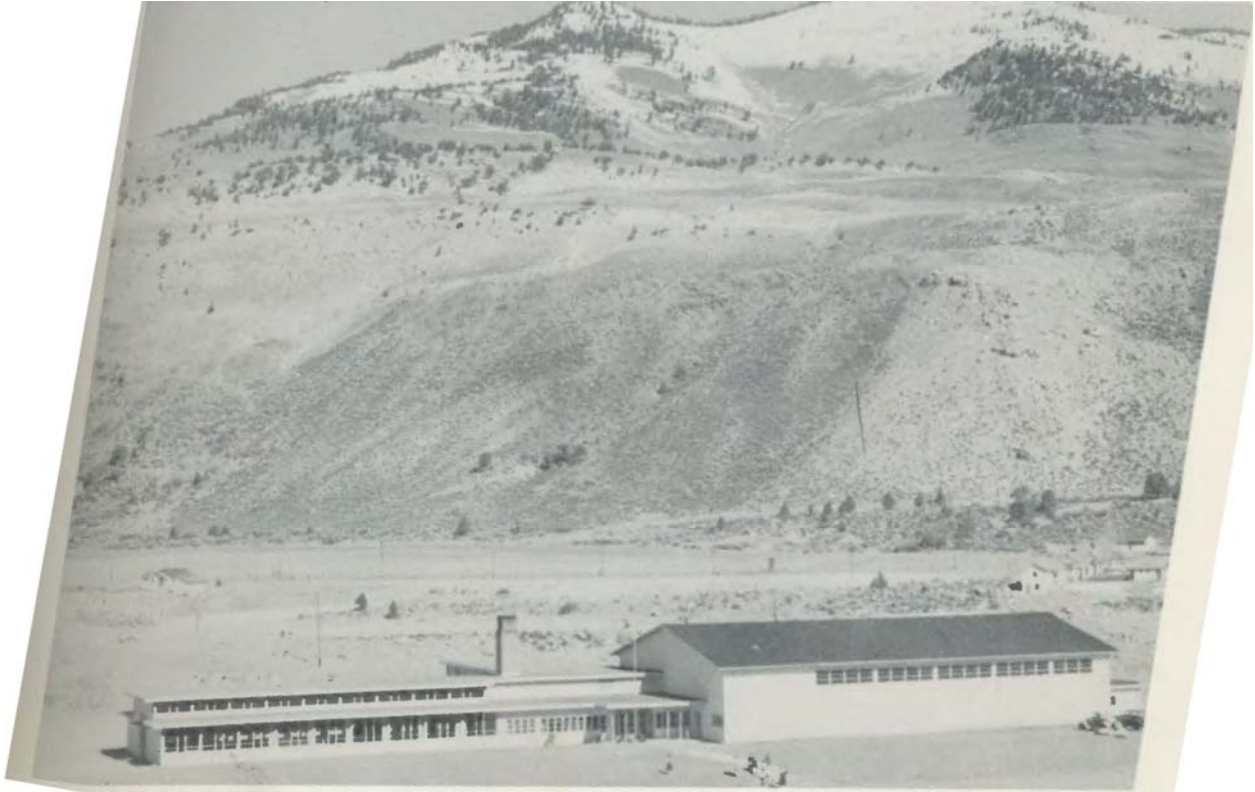
Photo on left taken about 1911 after the second story was added.



The basement of Eagles Hall (built in 1910), and where the current Gardiner Community Center is located, doubled as a high school for 15 years in the mid 1900's. The pictures above and right are of one of the first school buses built for Gardiner Schools and the first new bus that was picked up and driven from Ohio back to Gardiner by Carson Hayes.



School Group in Gardiner - About 1921 the upper grades posed with their teacher, Rose Kobe (Mrs. Herb French). Back rows: C. E. "Dig" Lind, John Jones, Elizabeth Renner, Joe Gassert, Marjorie Somerville, Orrin Hart, Miss Kobe, Don McGann, Ann Gassert, Alex Gagnier, Virginia Pound, Tom Somerville. Front rows: A. R. "Bob" Nelson, Bob Wright, Jim Somerville, Clifford Collins, Averil Heator, x, Marjorie Dewing, Francis Shaw, Elsie Pfohl, Gertrude Link, Walt Arnholt, Dave Hart



A new school was built in 1950 at the current location of the Gardiner School next to Arch Park. An addition was added about 1960 in the picture below.



Half of the new school burned in 1985 (Picture above right) and was rebuilt the previous year.

Gardiner School Today!

